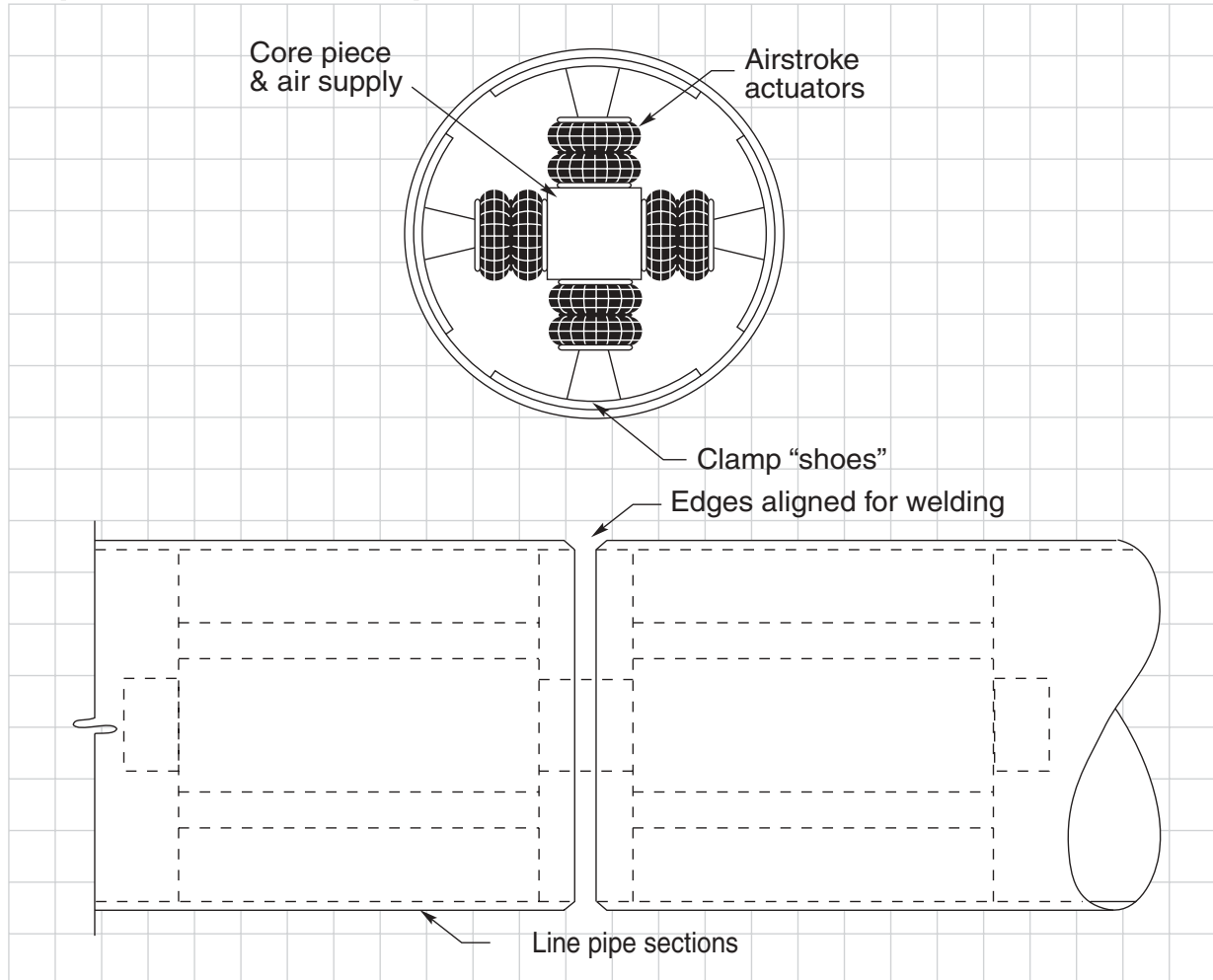


Pipe Weld Clamp



Problem

An internal core and clamp assembly must hold pipes firmly and in perfect alignment while they are being welded.

Solution

Small Airstroke actuators are positioned on a core. When inflated, the actuators extend four clamp shoes to the pipe's sides and hold the pipe tight.

Benefit

A low profile design allows the actuators to fit into pipes with small diameters where their powerful, short stroke action provides the consistent force to hold the pipes stationary and in alignment during welding. Also their lack of rod and piston seals makes them less susceptible to damage from off center loading.